

Caudron C.R.-714C1 Front Engine Cowl

For Azur 1/32 kit

This is simply replacement of kit part (no. A8).
Our product captures correctly profile and details of front engine cowling of this rare aircraft.

A little compromise has been done between accuracy and good fit to original kit, which has oversized radius of upper front of fuselage and, what it implies, too large spinner diameter.

Sorry, we don't plan to built a new fuselage for this model...

Our part fits good (a little adjustment may be needed on inside of fuselage halves) to both original fuselage and spinner. Air intakes and upper hatch with its hinge, locking bolts and cooling louvers are carefully reproduced. No original kit parts were used during creation of pattern model.



Design & Master Pattern by Franek Strzelczyk

High resolution photos at: www.polimedia.pl/apm

Use 5-minute epoxy and/or cyanoacrylate adhesive to glue resin with plastic.

Work like with usual resin parts:

Use dust mask to protect respiratory system. Wet sanding is recommended. Avoid contact resin dust with eyes and (prolonged) with skin. May cause irritation or sensitization. Disposable gloves and safety goggles are recommended.

Before painting degrease surface with Testors Plastic-Prep or pure benzine (petroleum ether).

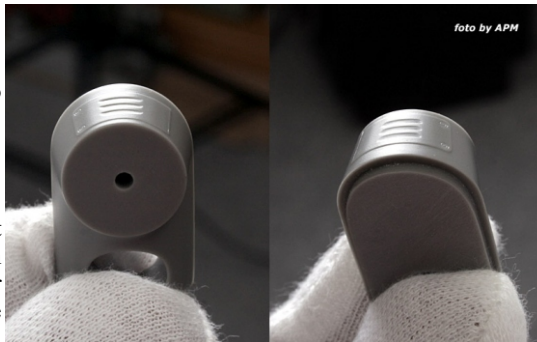
Do not use paint thinner or gasoline. Do not use benzine to degreasing styrene plastic parts.

Prime with good plastic primer (Mr.Hobby: Mr. Resin Primer, Mr.Surfacer 1000), automotive plastic primer or good enamel paint.

Join parts with medium viscosity cyanoacrylate and 5-minute epoxy glue.

Always work in well ventilated area.

Take caution when handling with flammable materials.



Caudron C.R.-714C1 Front Engine Cowl

For Azur 1/32 kit

This is simply replacement of kit part (no. A8).

Our product captures correctly profile and details of front engine cowling of this rare aircraft.

A little compromise has been done between accuracy and good fit to original kit, which has oversized radius of upper front of fuselage and, what it implies, too large spinner diameter.

Sorry, we don't plan to built a new fuselage for this model...

Our part fits good (a little adjustment may be needed on inside of fuselage halves) to both original fuselage and spinner. Air intakes and upper hatch with its hinge, locking bolts and cooling louvers are carefully reproduced. No original kit parts were used during creation of pattern model.



Design & Master Pattern by Franek Strzelczyk

High resolution photos at: www.polimedia.pl/apm

Use 5-minute epoxy and/or cyanoacrylate adhesive to glue resin with plastic.

Work like with usual resin parts:

Use dust mask to protect respiratory system. Wet sanding is recommended. Avoid contact resin dust with eyes and (prolonged) with skin. May cause irritation or sensitization. Disposable gloves and safety goggles are recommended.

Before painting degrease surface with Testors Plastic-Prep or pure benzine (petroleum ether).

Do not use paint thinner or gasoline. Do not use benzine to degreasing styrene plastic parts.

Prime with good plastic primer (Mr.Hobby: Mr. Resin Primer, Mr.Surfacer 1000), automotive plastic primer or good enamel paint.

Join parts with medium viscosity cyanoacrylate and 5-minute epoxy glue.

Always work in well ventilated area.

Take caution when handling with flammable materials.

